



WestTEC is a modern, well-equipped facility where students can undertake accredited Certificate training while still at school. The centre partners with seven local schools (Forest Lake State High School, Springfield Central State High School, Redbank Plains State High School, Woodcrest State College, Bundamba State Secondary College, Bellbird Park State Secondary College and Ripley Valley State Secondary College) to provide specialised vocational training in many trade and service fields. Our successful partnership with training organisations aims to achieve positive educational outcomes for Year 10, 11 & 12 students.



### Certificate II Automotive Vocational Preparation

- 4 Terms, 1 day per week.
- VETiS Funded. Up to 4 QCE Points.

### Certificate II Engineering Pathways

- 4 Terms, 1 day per week.
- VETiS Funded. Up to 4 QCE Points.

### Certificate I Construction

- 4 Terms, 1 day per week.
- VETiS Funded. Up to 3 QCE Points.

### Certificate II Plumbing

- 4 Terms, 1 day per week.
- VETiS Funded. Up to 4 QCE Points.

### Certificate II Retail Cosmetics

- 4 Terms, 1 day per week.
- VETiS Funded. Up to 4 QCE Points.

### Certificate II Salon Assistant

- 4 Terms, 1 day per week.
- VETiS Funded. Up to 4 QCE Points.

### Certificate II Salon Assistant - BARBERING

- 4 Terms, 1 day per week.
- VETiS Funded. Up to 4 QCE Points.

### Certificate II Electrotechnology

- 4 Terms, 1 day per week.
- VETiS Funded. Up to 4 QCE Points.

### Certificate II in Manufacturing Technology

- 4 Terms – 1 day a week
- VETiS funded, up to 4 QCE Points

### Certificate II in Community Services – Childcare

- 4 Terms (subject to change) – 1 day a week
- VETiS funded, up to 4 QCE Points

### Dual Certificate II in Community Services/Certificate III in Early Childhood

- 8 Terms (subject to change) – 1 day a week
- Partial VETiS funding + Price TBA, up to 8 QCE Points

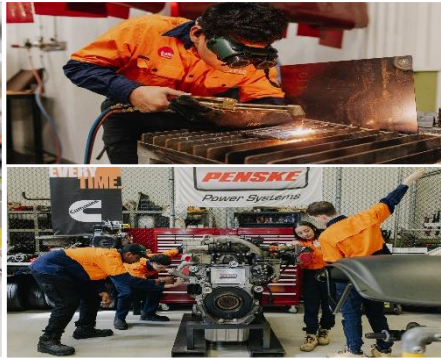
*\* These are our current course offerings*

*\* Course offerings and prices are subject to change*

*\* \$55 fee for all WestTEC students - for shirt, lock for lockers & Compass card - payable to your school upon invoice.*

*\* All students will be required to bring their own Laptops*

*\*\* See your school Senior Schooling or VET HOD for more information OR on how to enrol!\*\**



### Certificate II Health Support Services

- 2 Terms, 1 day per week.
- VETiS funded, Up to 4 QCE Points.

### Certificate III Health Services Assistant

- Students must have completed Certificate II Health Support Services to be enrolled in this course.
- 1 Term, 1 day per week
- \$800 payable to Mater Education, up to 6 QCE Points.

### Certificate III Health Administration

- 1 Term, 1 day per week
- \$900 payable to Mater Education, up to 6 QCE Points

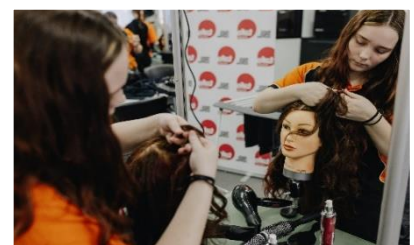


### Certificate II Resources & Infrastructure

- 8 Weeks, 1 day per week
- \$100 Camp fee – payable to RTO, up to 4 QCE Points



- CONstruct Program – **Year 11 & 12 ONLY – Entry via application and interview process**
- 4 Terms, 1 day per week
- VETiS funded, up to 3 QCE points



### Certificate IV in Justice Studies

- 2 Terms, 1 day per week.
- Partially VETiS funded, up to 6 QCE Points.
- Cost: \$TBA



### Certificate III Aviation (Remote Pilot)

- 4 Terms, 1 day per week.
- VETiS funded, up to 6 QCE points.
- Option to complete your CASA Remote Pilot License (\$400)



### Certificate II Supply Chain Operations

- 2 Terms, 1 day per week.
- VETiS funded + \$100 fee for service. Up to 6 QCE Points.